

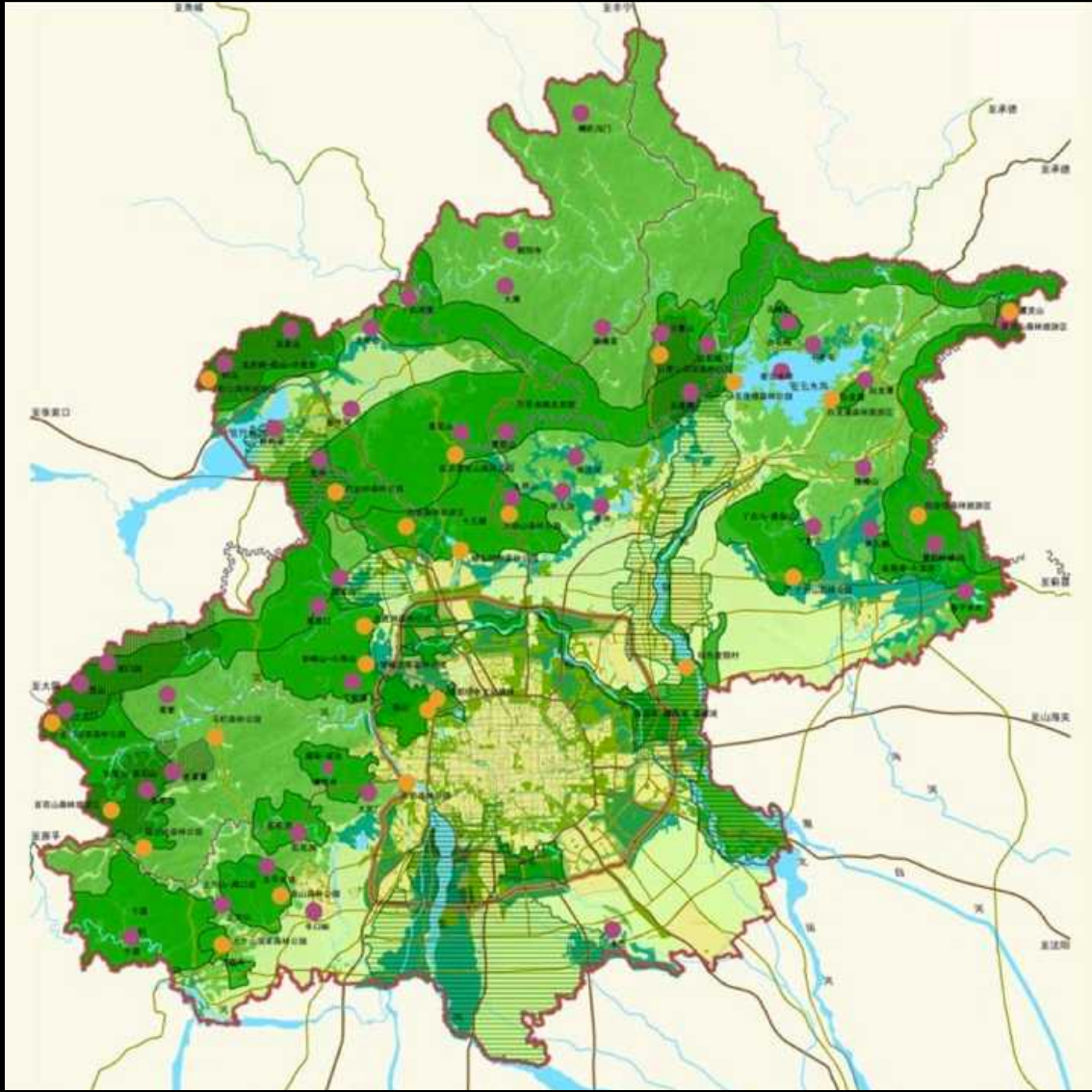
2020 Spring TSINGHUA & NUS Joint Studio

# SHARING CITIES

**Beijing**

EPMA Urban Design Studio

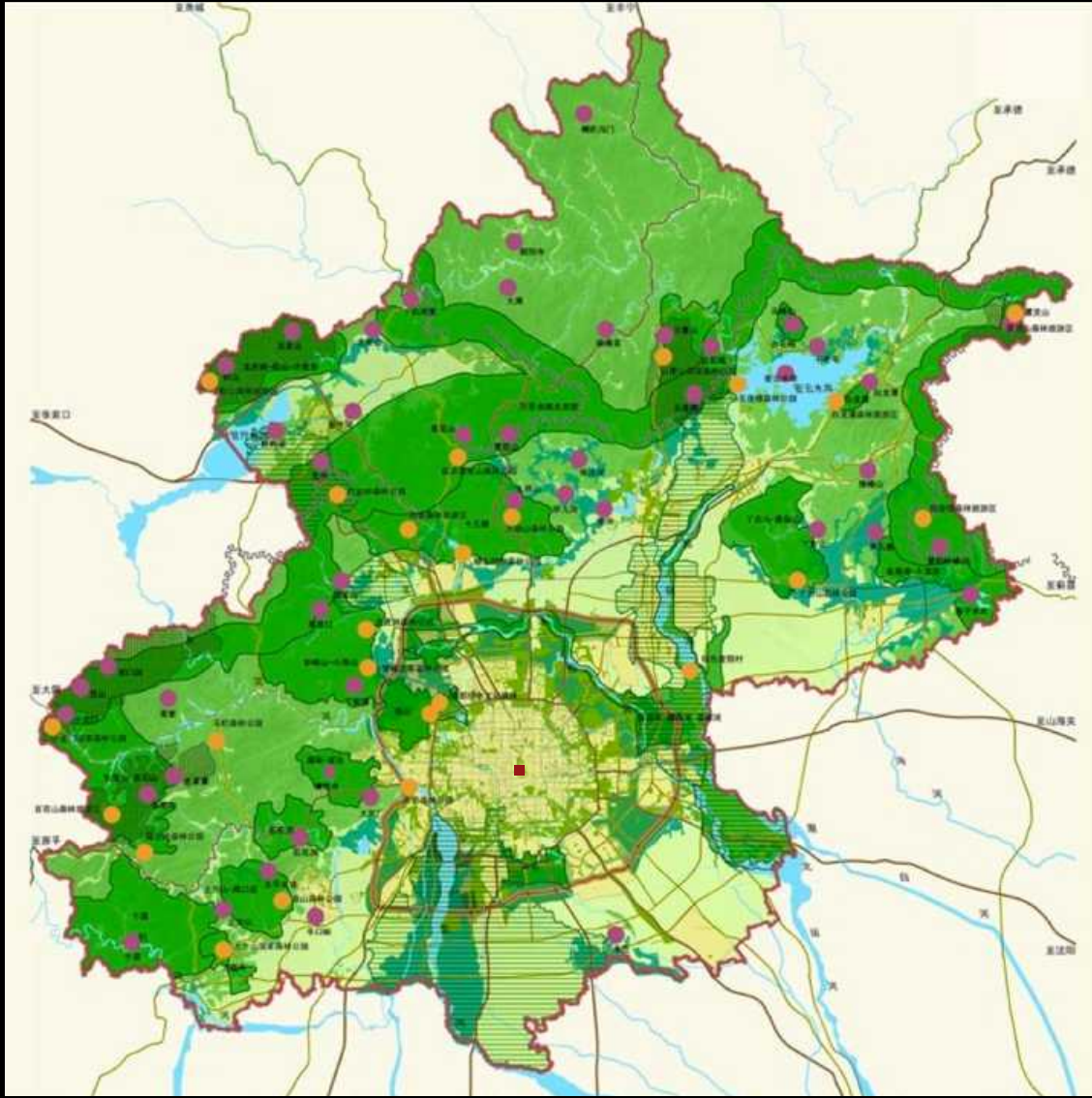
2013-2020



Beijing: a big city

area: 16 000 km<sup>2</sup>  
(20x Berlin)  
(20x Singapore)  
(ca 70x Amsterdam)

population:  
ca. 40 Milion





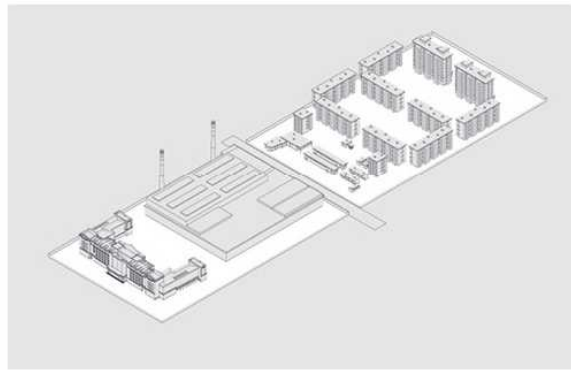
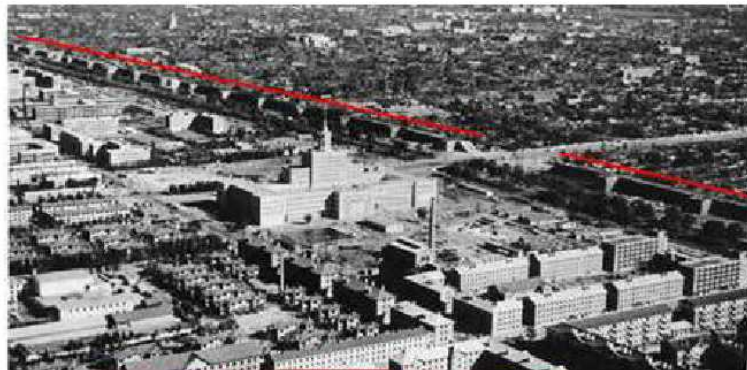
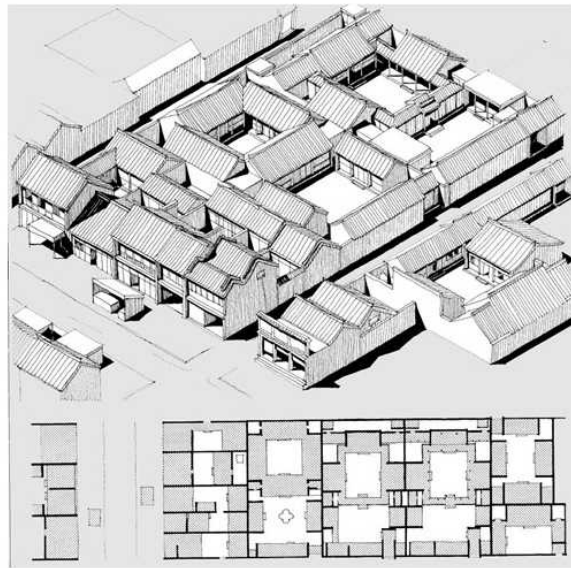


Beijing: terrain





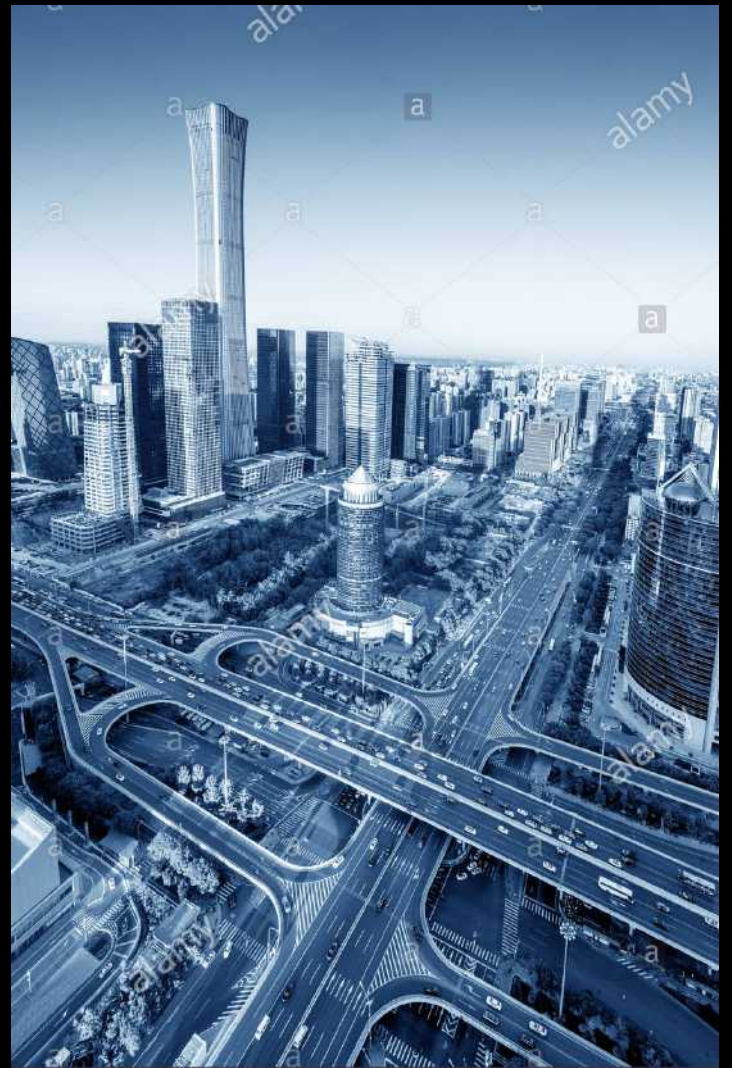




Mao: from 'hutong' to 'danwei'











©2009 Google, Images ©2009 DigitalGlobe, GeoEye

Los Angeles



Beijing













**2013 - Knowledge City**

**2014 - Water City**

**2015 - Healthy City**

**2016 - Edge City**

**2017 - Sharing History<sup>+</sup> NUS**

**2018 - Sharing Industry**

**2019 - Sharing Countryside**

**2020 - Sharing Guomao**

2019

2014

2013

2018

2015

2016

2017

2020

2013 - Knowledge City

2014 - Water City

2015 - Healthy City

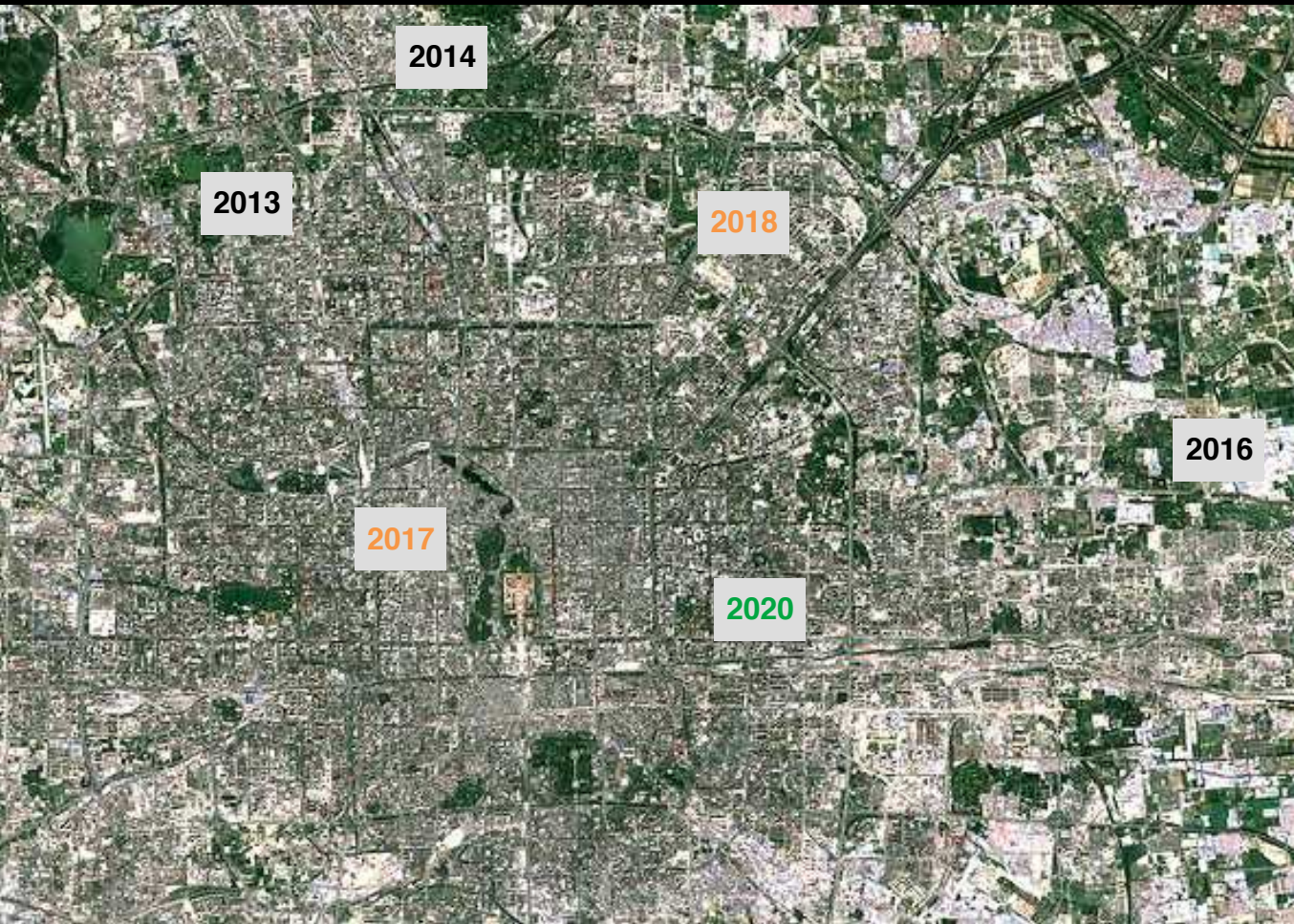
2016 - Edge City

2017 - Sharing History

2018 - Sharing Industry

2019 - Sharing Countryside

2020 - Sharing Guomao





# SHARING CITY 共享城市

Sharing Lifestyle and Urban Regeneration  
共享生活与城市更新







01 / Sharing City Seminar and Discussion







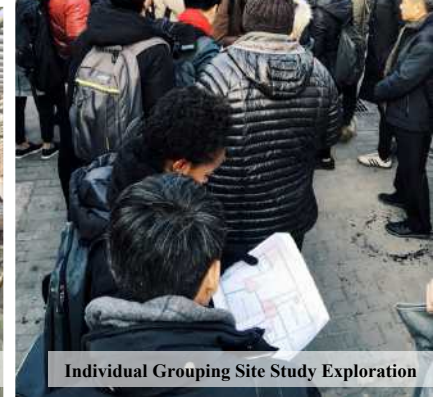
02 / Site Visits



Open House Visits



Understanding a Historical Site



Individual Grouping Site Study Exploration





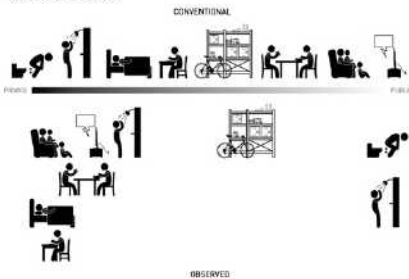
03 / Design Charrette Review



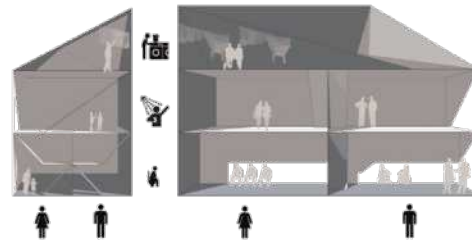
## Sharing Workspace



### HIERARCHY OF PRIVACY



### Interior organization



### Co<sup>3</sup> "Sharing commerce is about creative entrepreneurship"

#### Why it works?

The system works because it is the result of a process of evolution where the community shaped their own rules and boundaries based on their daily needs. They can't replicate the product of the social system by setting how the system works. It's the fact that they are producing a public economy for the area where the different spaces interact in a private system.

#### Creating a Self-Filtering community



Coaching / Inspiring a Principle of sharing as a waste-water / recycling that we focus the concepts of community. Ecosystem within a larger system. It creates alignment and engage the community into a commercial organization.

#### Employment for whom?

Those Live - Mid class Residents who want the scale. Everyone in the community has a stake in the economic.

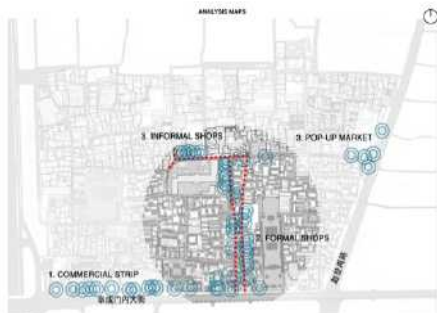
#### What are we going to recycle?

Registered public: tables, chairs, Lockers, Public (don't need to be shared) e.g. Egg racks.

#### What will the recycle materials be used for?

Reusing materials (transformer blocks, Containers) Hygienic Containers (Urban Furniture)

Note: These materials can be used and utilized by the community.



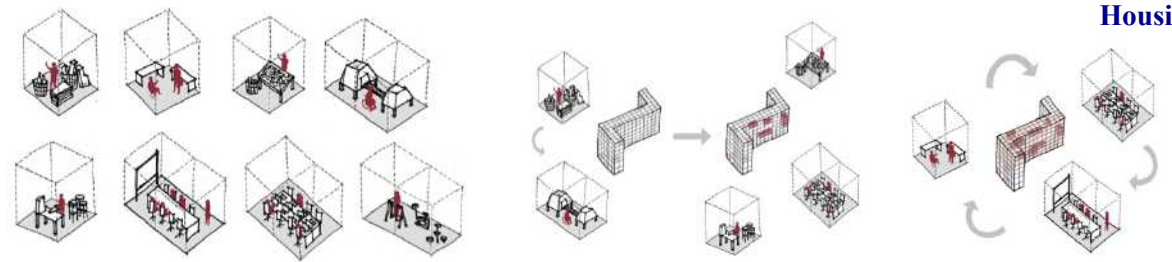
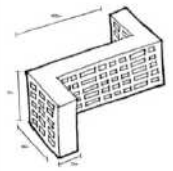
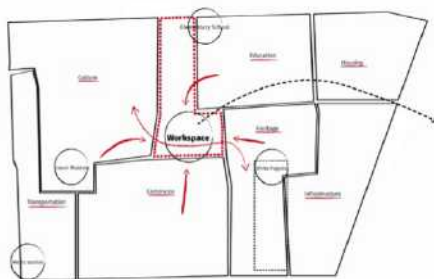
### SHARING ECONOMY



## Sharing Commerce



## Sharing Housing





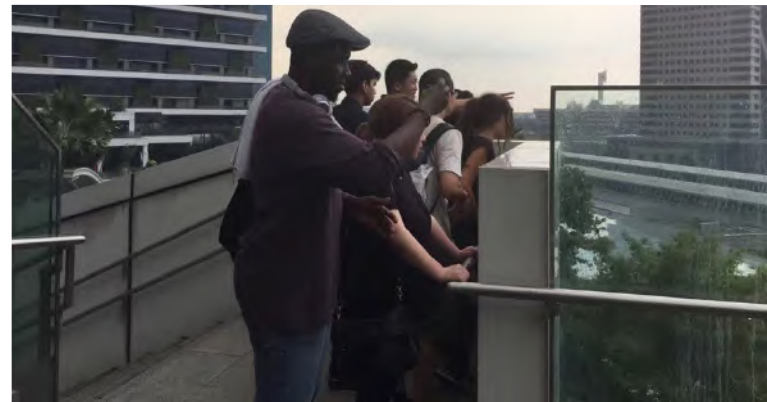


01 / Sharing Cities Seminar Lectures and Discussion





02 / Site Visits to Joo Chiat and Jurong East





03 / NUS Interim Crit Review , Presentations, Design Charrette



Multi-Cultural, Multi-National

Student Group Discussions



Case Studies Presentation Discussion



Brainstorming Sessions with Tutors



Interim Crit Review



Design Charrette Review



Design Charrette Consultation with Tutors



Inter-Faculty Exchange Opportunities





01 / Sharing Cities Seminar Guest Lectures and Discussion





MAD Architects



02 / Architecture Office Tours



People's Architecture Office





# SEOUL INTERNATIONAL STUDIO 2017

DANKOOK HANYANG ERICA HONGIK YONSEI UNIVERSITY OF SEOUL NUS TSINGHUA UCLA UT AUSTIN FEDERAL UNIVERSITY OF RIO DE JANEIRO UNIVERSITY OF CAPE TOWN UNIVERSITY OF GENOA MIMAR SINAN THE BARTLETT THE ROYAL DANISH ACADEMY OF FINE ARTS

05.27 14:00-17:00  
UIA SIS DIALOGUE: Resilient Cities through Culture

05.28 10:00-18:00  
UIA SIS FINAL REVIEW

05.27-06.01 UIA SIS EXHIBITION

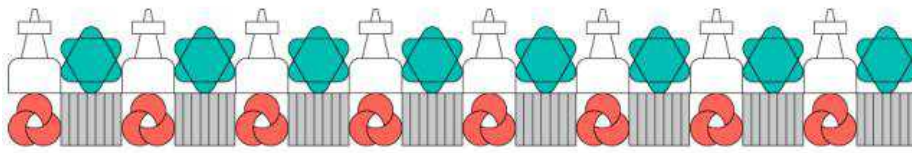
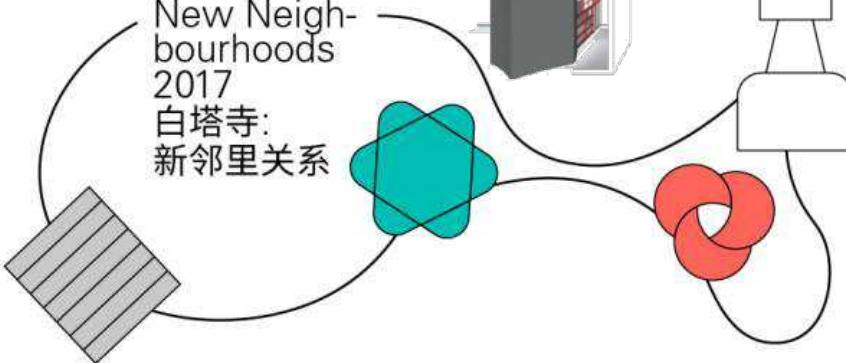




# 白塔寺再生计划

## BAITASI REMADE

Baitasi:  
Towards  
New Neighbourhoods  
2017  
白塔寺:  
新邻里关系





# 共享城市

## SHARING CITIES

## 共享城市

Profound impact of new concepts of for-profit sharing of basic everyday commodities can be widely observed across the world. It changes the ways we commute (bike- and car sharing), shop (sabatba/ amazon) or work (co-working) and redefines our living (shared-housing, airbnb), and learning (e.g. open-online courses edX and MOOC) experiences. It redefines the need for us to own everything we want to use.

The "Sharing Cities" studio aims to provide solutions to emerging concept of sharing, and responds to the idea of public space sharing and sustainable urban development from social, economic and humanitarian perspectives. The studio brief has been designed to discuss the idea of sharing in eight different themes: sharing housing, sharing workspace, sharing transportation, sharing education, sharing culture, sharing heritage, sharing commerce and sharing infrastructure. The National University of Singapore has selected two sites: a site in the city center where the traditional Nanyang culture originates: Joochiat and a 'sub-urban' site where a railway station and residential life intersects: Jurong East.

For the work presented here, we used this starting point for an urban regeneration model: sharing the city. The design proposals are the outcome of a joint design research cooperation between National University of Singapore and Tsinghua University, regarding the topic of urban regeneration, with a specific focus on the influence of the sharing economy on urban development. The cooperation included an 8-week [joint] design research studio and three complementary workshops with seminars at the beginning, the middle and the end.

清华大学建筑、规划、景观设计教学丛书 共享城市

SHARING CITIES

黄鹂 [荷] 和马町 张焱  
张悦 陈德钦

清华大学出版社





## We study sharing practices and we design shared spaces.

Sponsored by Ng Teng Fong Charitable Foundation (Hong Kong), **NUS-Tsinghua Design Research Initiative for Sharing Cities (NT-DRISC)** was jointly initiated by the [Department of Architecture, National University of Singapore](#) and the [School of Architecture, Tsinghua University](#). The aim is to bring together scholars and students from the two top Asian architecture schools as well as experts and professionals having the same interests, exploring emerging space sharing practices and new dedicated typologies of shared spaces in the city.

With multi-disciplinary urban research expertise and excellence in design, we investigate on the spatial attributes of sharing practices and the economics, institutions, governance, and ethics of space sharing; develop insights on the conditions that the built environment of the city imposes on sharing practices and the transformation of urban spaces that sharing activities enable; and develop innovative design solutions that can encourage and promote meaningful sharing activities.

Initiated and presented by:



Sponsored by:



In a partnership with:



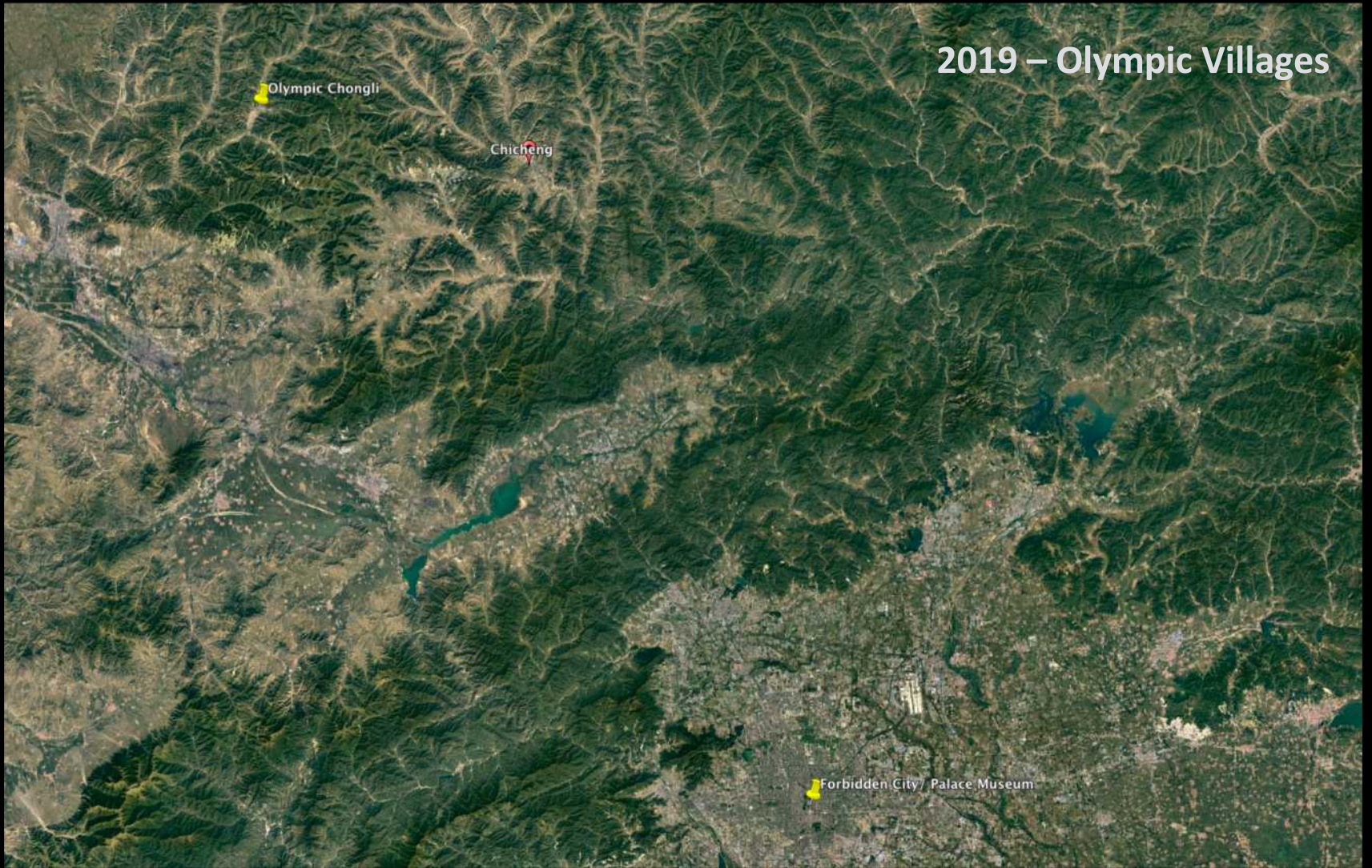


# 2019 – Olympic Villages

Olympic Chongli

Chicheng

Forbidden City / Palace Museum



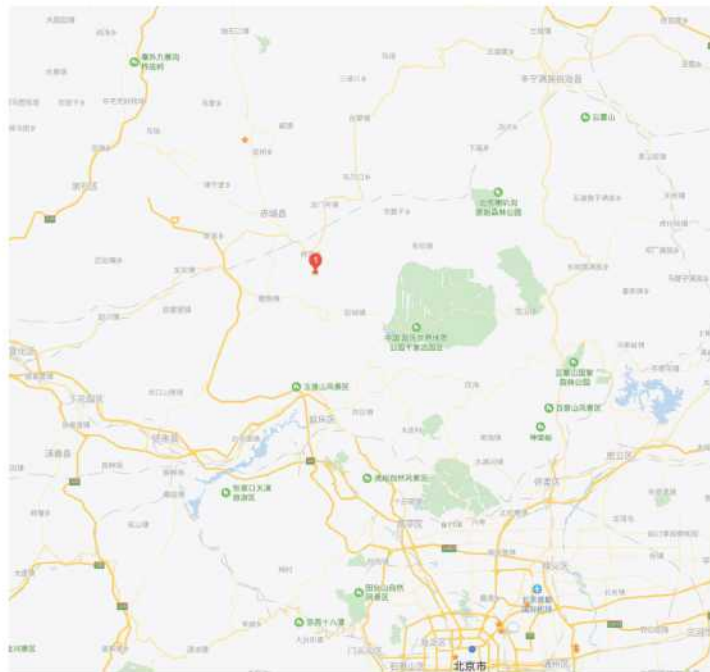
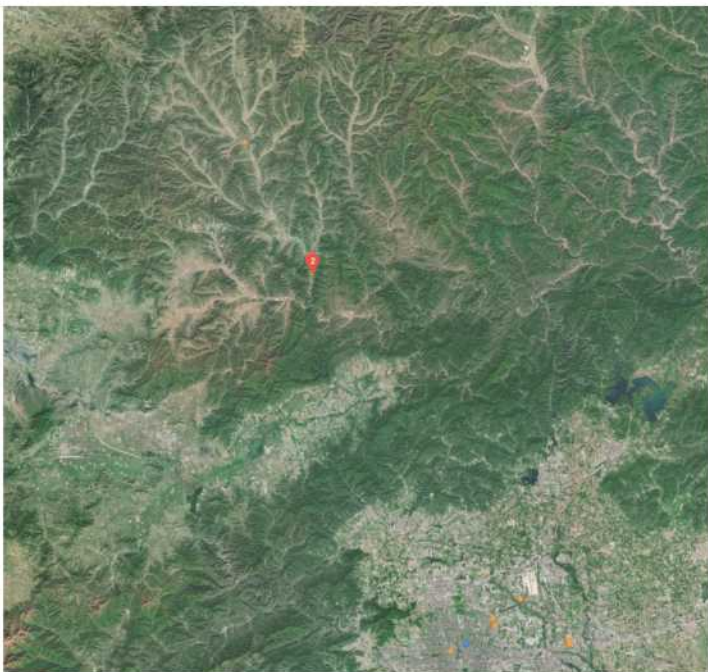




一样田乡-上马山村



## 8\_样田乡上马山村



上马山村

Description for your map.

Legend

• Zhan



Earth

S / Airbus

200 m



















## Mountain Village

Lorenzo, Jack, Aleksandra, Otmame, Qingqing

### DESIGN STUDIO 3

Project Year:  
2019

Location:  
Wanshuquan village

Students:  
Lorenzo Mariani, Jack Shi, Aleksandra Platova, Otmame Otmame, Qingqing Hu

Design Studio Tutors:  
Yue Zhang, He Huang, Martijn de Geus

Key words:  
river, gathering spaces

The idea is to transform this "exit way 2022 Olympics games village" to the Gateway Village. It can become the entrance of the region and of a bigger system.

**TANG DYNASTY WALL.** As the first face of the village, the idea is to highlight the wall, its history and materiality. The entrance is now a museum that will display the history of the village, a bus stop for the visitors and a gathering area for the villagers.

**MAIN STREET.** The street will represent the identity of the people living there and providing at the same time the new public function capable of welcoming people: restaurants, small shops, public spaces as well as services and facilities. For the village it will represent then the economical center.

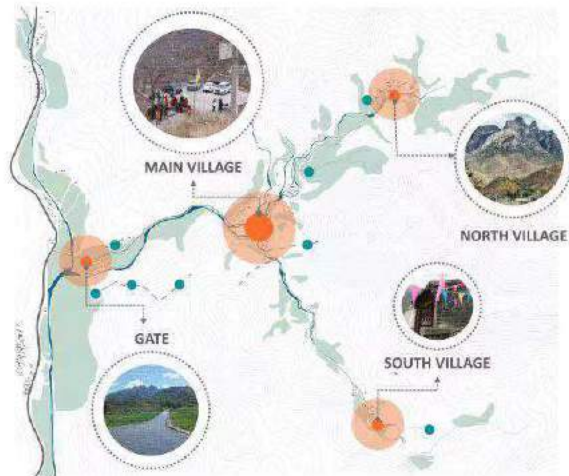
**GATEWAY HOUSE.** The idea is to transform the fortress house to an indoor-welcoming place that will provide the basic facilities. The strategy is to use one plug-in that links street and courtyard, and one plug-in that connects users from the courtyard to the interior.

**QUARRY FOREST.** Two quarries have damaged the landscape at the back of the village. The idea is to recover that land and transform it in a productive forest. Using both quarries, the idea is to create a series of terraces that will stabilized the ground and at the same time will suit the site for grow plants.

These forest are also the beginning of a hiking route that will connect the village with the LOOKOUT VALLEY, the cave houses, the 1000 year old tree, the old village and hills that surround Duanniwogou.



Strenuous/Chianteradus





#### TANG DYNASTY WALL

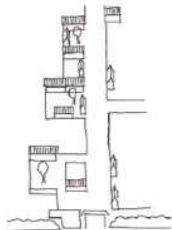
We purpose activate it by put museum beside the wall and created the relation of the museum with every side of it, for example, in front is the bus stop. At the back is small public gathering space and the side that next to the wall it provides another perspective for the great wall.



#### MAIN STREET

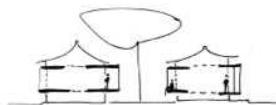
It represents the first image of the village beyond the ancient wall, becoming the new core of the village for the touristic vision brought by the Olympics games. The street will represent the identity of the people living there and providing at the same time the new public function capable of welcoming people: restaurants, small shops, public spaces as well as services and facilities. For the village it will represent then the economical center.

This can be possible opening some of the courtyards, using abandoned houses and secondary building to this new functions making all of them visible from the street. This new elements are activating the connection with the space from the outside to the inside.



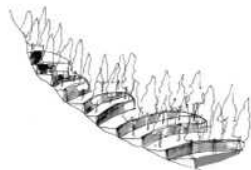
#### GATEWAY HOUSE

The idea of the Gateway house is to transform the fortress house to an indoor-welcoming place that will provide the basic facilities. The strategy is to use one plug-in that links street and courtyard, and one plug-in that connects users from the courtyard to the interior. While at the same time both plug-ins are a linkage, they are also the facilities containers. The plug-in is design as a module which would hold facilities and gathering activities.



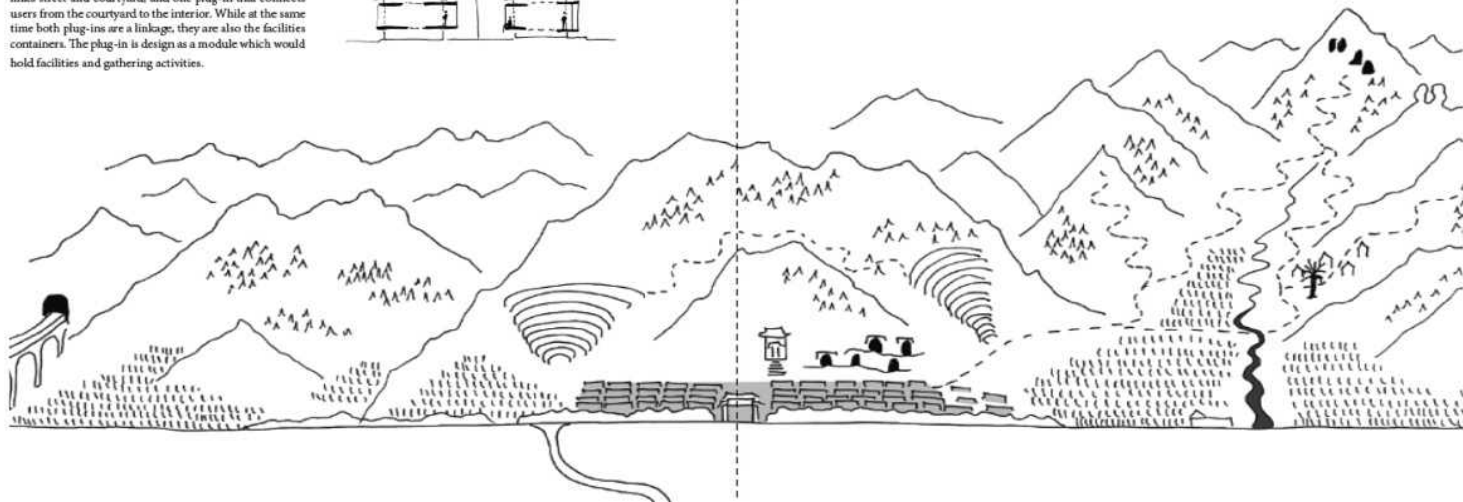
#### QUARRY FOREST

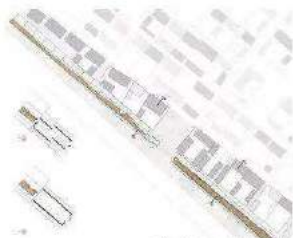
A forest park is designed within the two quarries. A single wall will be built, meandering through the quarries and reaching the top. It makes terraces in order to stabilize the ground and keep the water. An altar platform is located at the top, to have a Taiji session or to observe the stars. The whole park is connected by a pedestrian and planted path joining Duanmogou's main street.



#### LOOKOUT VALLEY

A forest park is designed within the two quarries. A single wall will be built, meandering through the quarries and reaching the top. It makes terraces in order to stabilize the ground and keep the water. An altar platform is located at the top, to have a Taiji session or to observe the stars. The whole park is connected by a pedestrian and planted path joining Duanmogou's main street.





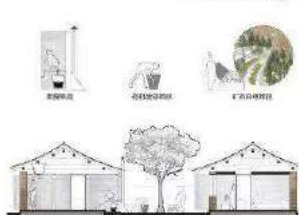
1. Long Dynasty wall - floor plan



2. Main street - floor plan



2. Main street - floor plan



3. Courtyard house - varied management systems



1. Museum interior view



196. Main street - perspective house



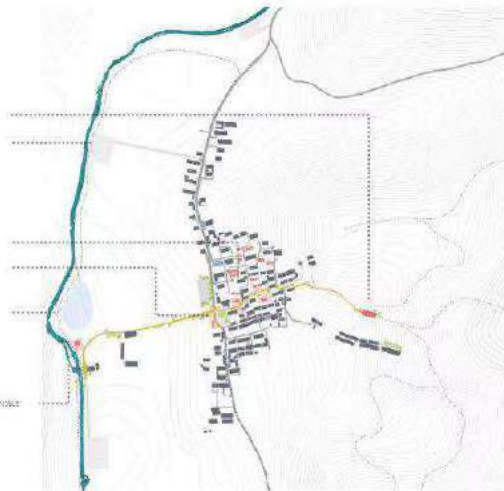
2. Main street life



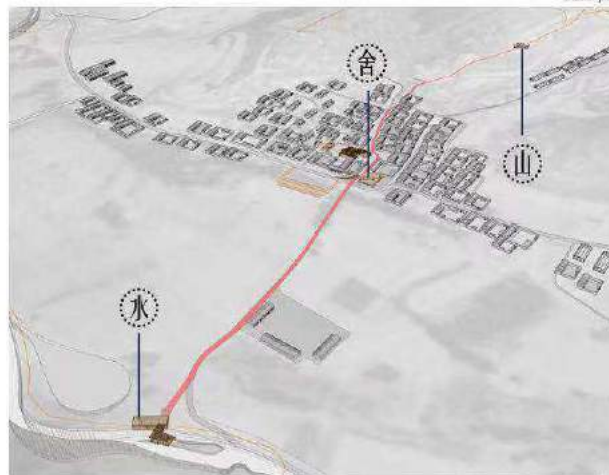
2. Life inside the house

11 of 21

- 2. Courtyard park
- 3. Dragon temple
- 4. Tri-square
- 5. Kuoshing ring
- 6. Entrance & tourist center



Master plan



Reyes House - Mountain / Master plan

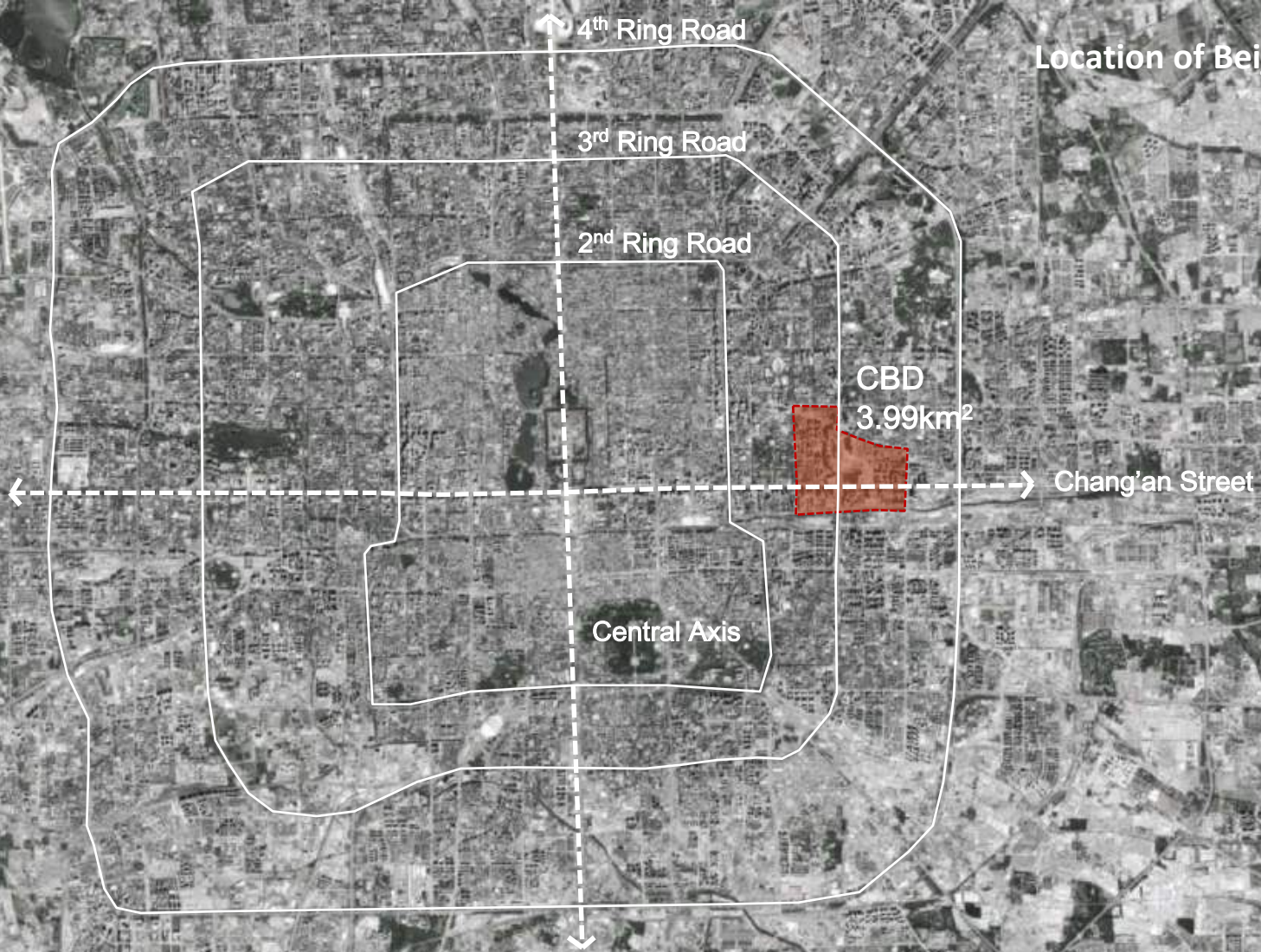


# SHARING CITY

Smart, future, shared lifestyle in the modern city : Guomao



# Location of Beijing CBD



2D





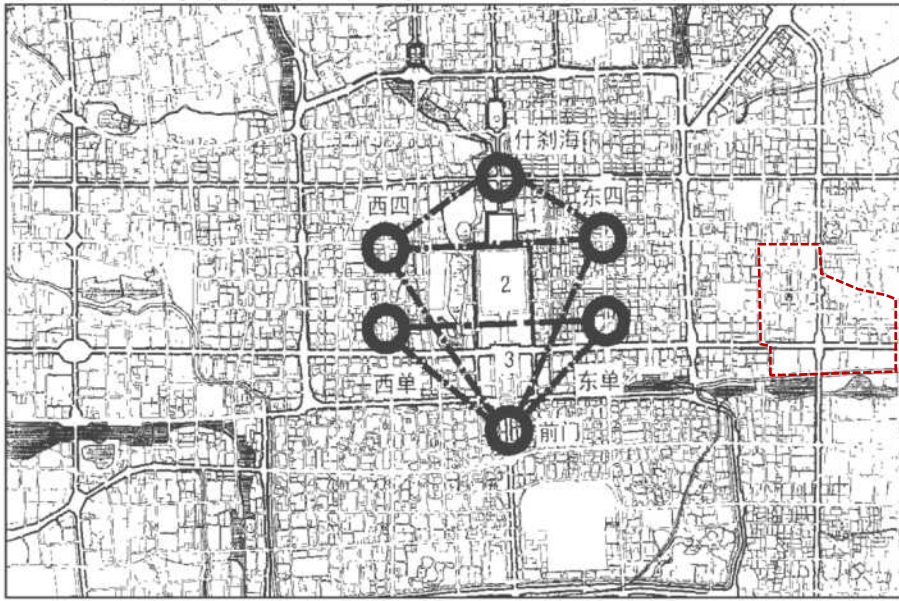


图 1 北京市传统商业中心结构历史演变图

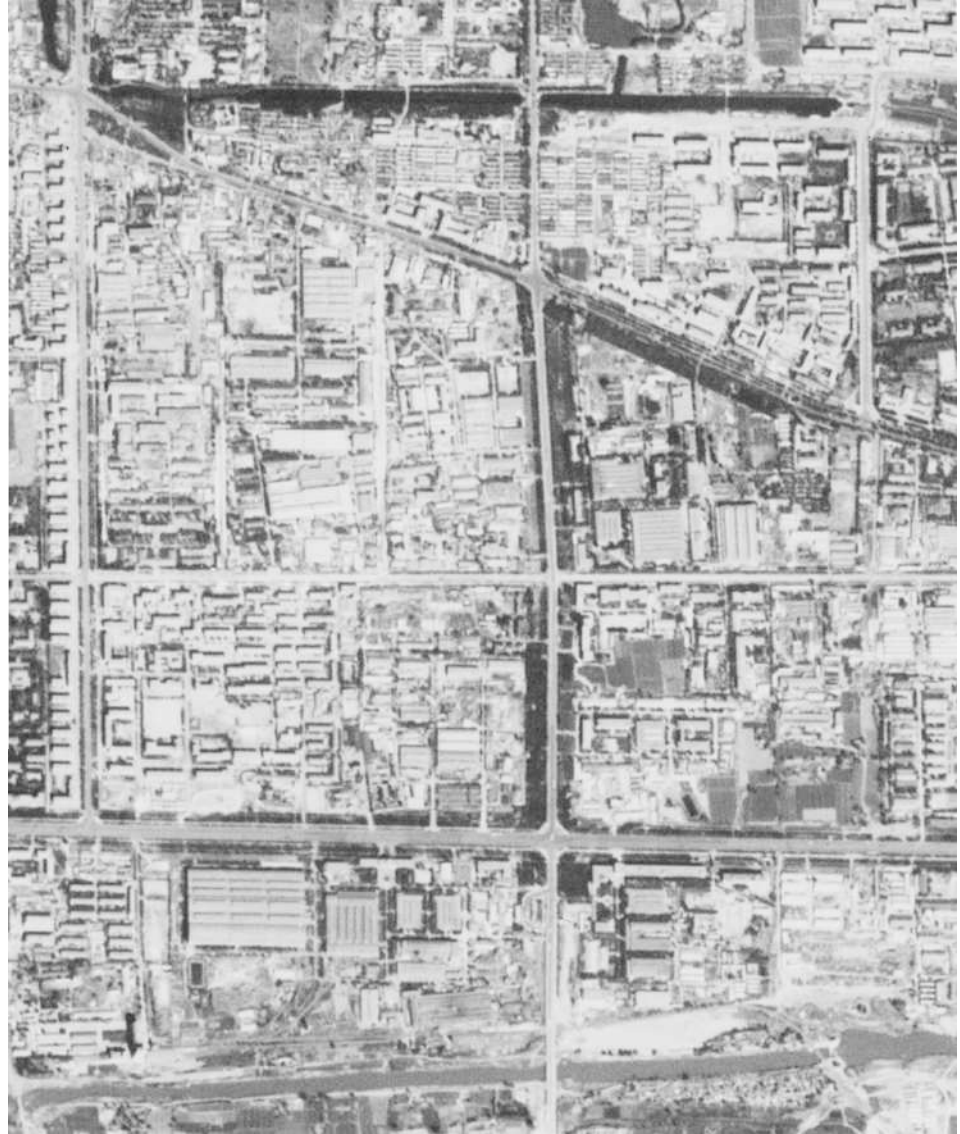
1. 元代正三角形结构：什刹海——东四——西四
2. 明代倒三角形结构：东四——西四——前门
3. 清代倒三角形结构：东单——西单——前门

From : ZHU Weihong ,City Planning Review, 1999, Vol.23(8), pp.12-17

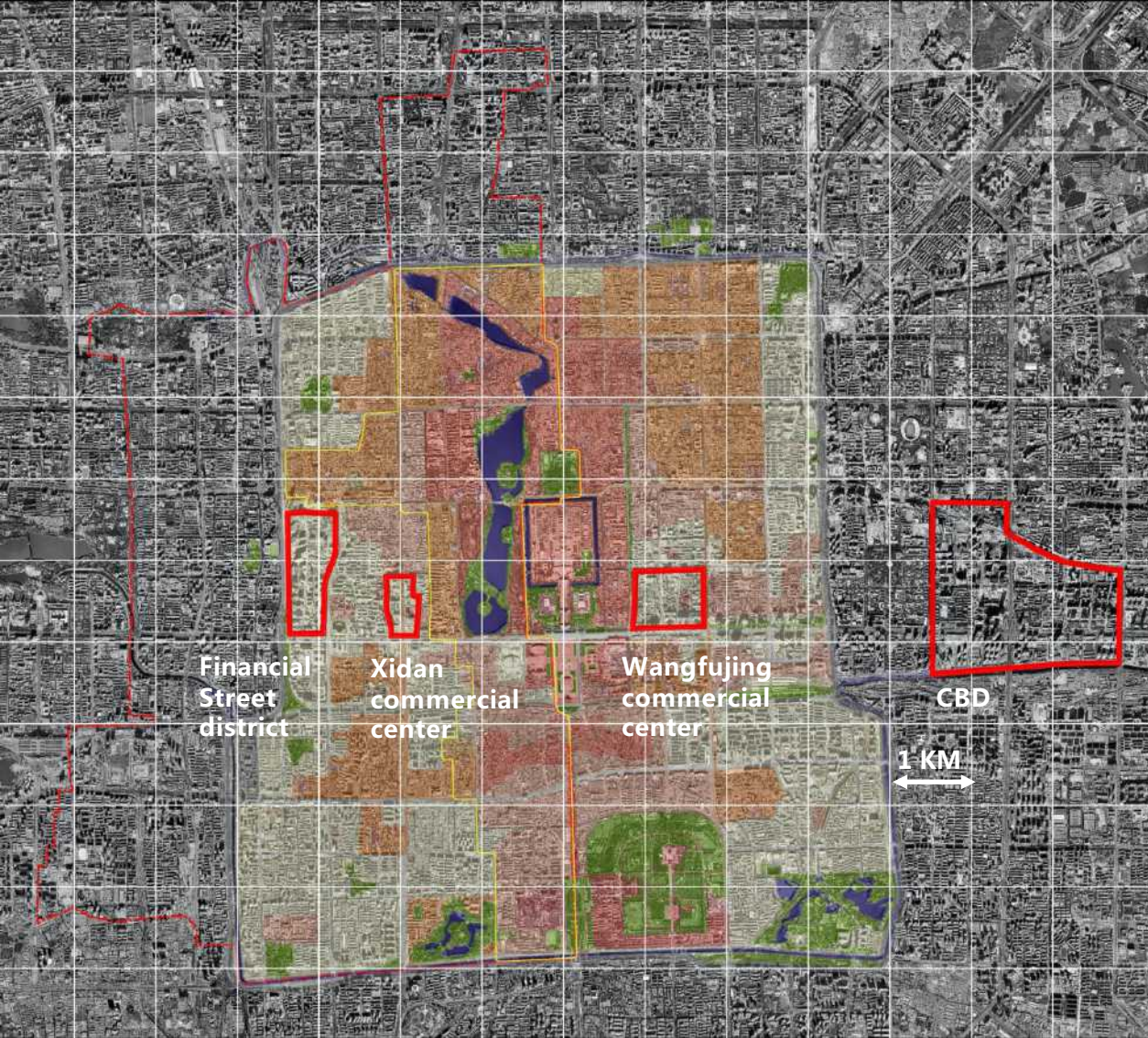
## Ancient commercial centers in Beijing City

### Beijing CBD before development. (1967)

Image from : [https://en.wikipedia.org/wiki/Beijing\\_central\\_business\\_district#/media/File:Beijing\\_CBD\\_before\\_development\\_-\\_satellite\\_image\\_\(1967-09-20\).jpg](https://en.wikipedia.org/wiki/Beijing_central_business_district#/media/File:Beijing_CBD_before_development_-_satellite_image_(1967-09-20).jpg)







Since 2000, CBD and Financial Street District were planned as two core financial centers for Beijing



Financial Street District plan



CBD plan



From Wang Yin , Beijing Urban Planning and Design Institute

## Beijing City global design competition in 2002 and 2009

In 2002, 11 design teams participated in the global competition for Beijing CBD. Pei Cobb Freed & Partners, SOM, China Architecture Design & Research Group, Tsinghua University Architecture Design Institute won the second prize with the vacancy of first prize.

In 2009 , SOM won the first prize in the global design competition for CBD east expansion.

Beijing City global design competition in 2002





# Beijing CBD East Expansion Competition, 2009



EXISTING CBD

EXPANSION AREA

DONGDAQIAO ROAD

EAST 3RD RING ROAD

CHAOYANG ROAD

XIDAWANG ROAD

JIANGUO ROAD

TONGHUI RIVER NORTH ROAD

EAST 4TH RING ROAD



# Beijing CDB East Expansion, SOM

[https://www.som.com/projects/beijing\\_cdb\\_east\\_expansion](https://www.som.com/projects/beijing_cdb_east_expansion)



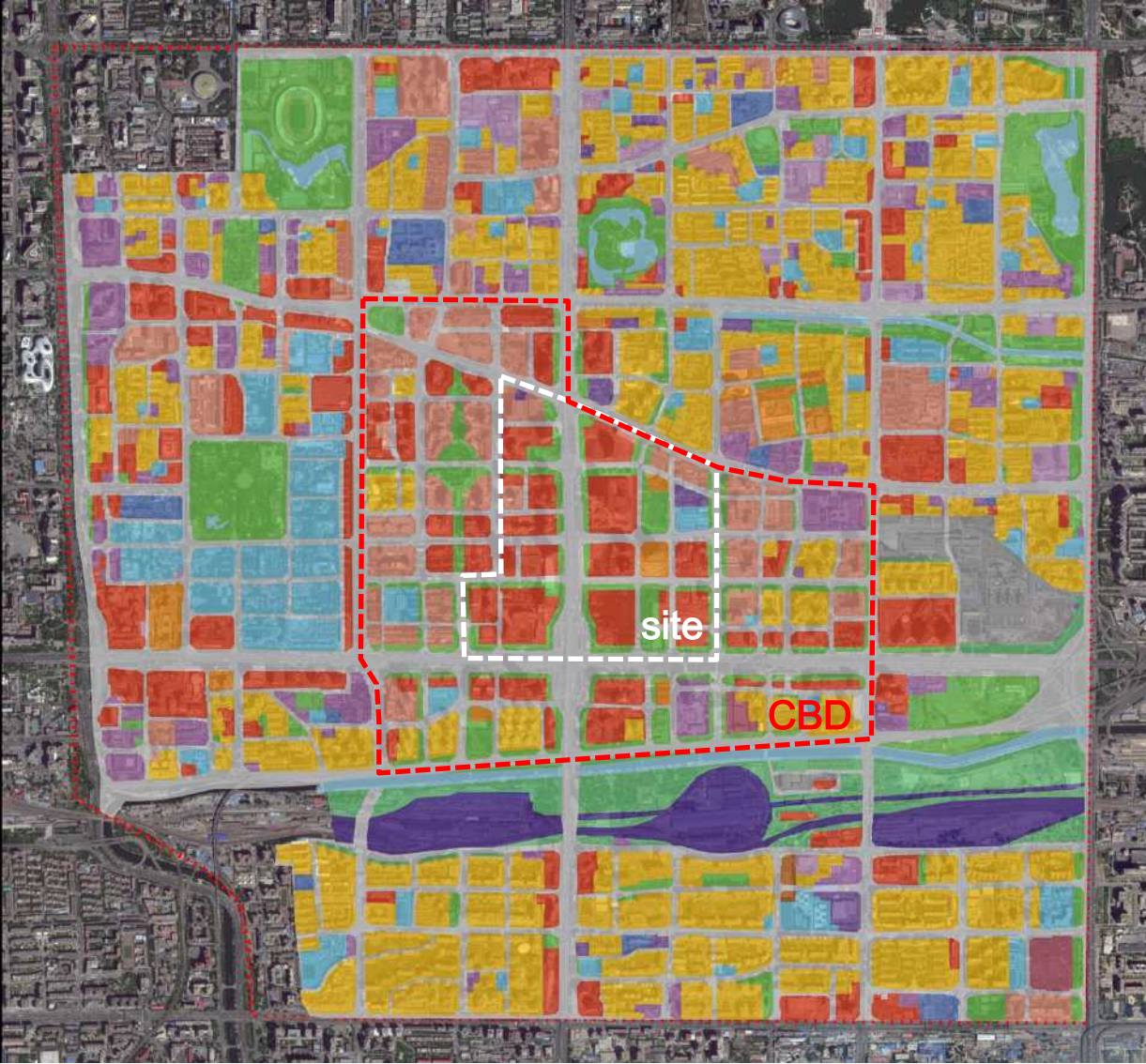


# Beijing CDB East Expansion, SOM

[https://www.som.com/projects/beijing\\_cbd\\_east\\_expansion](https://www.som.com/projects/beijing_cbd_east_expansion)



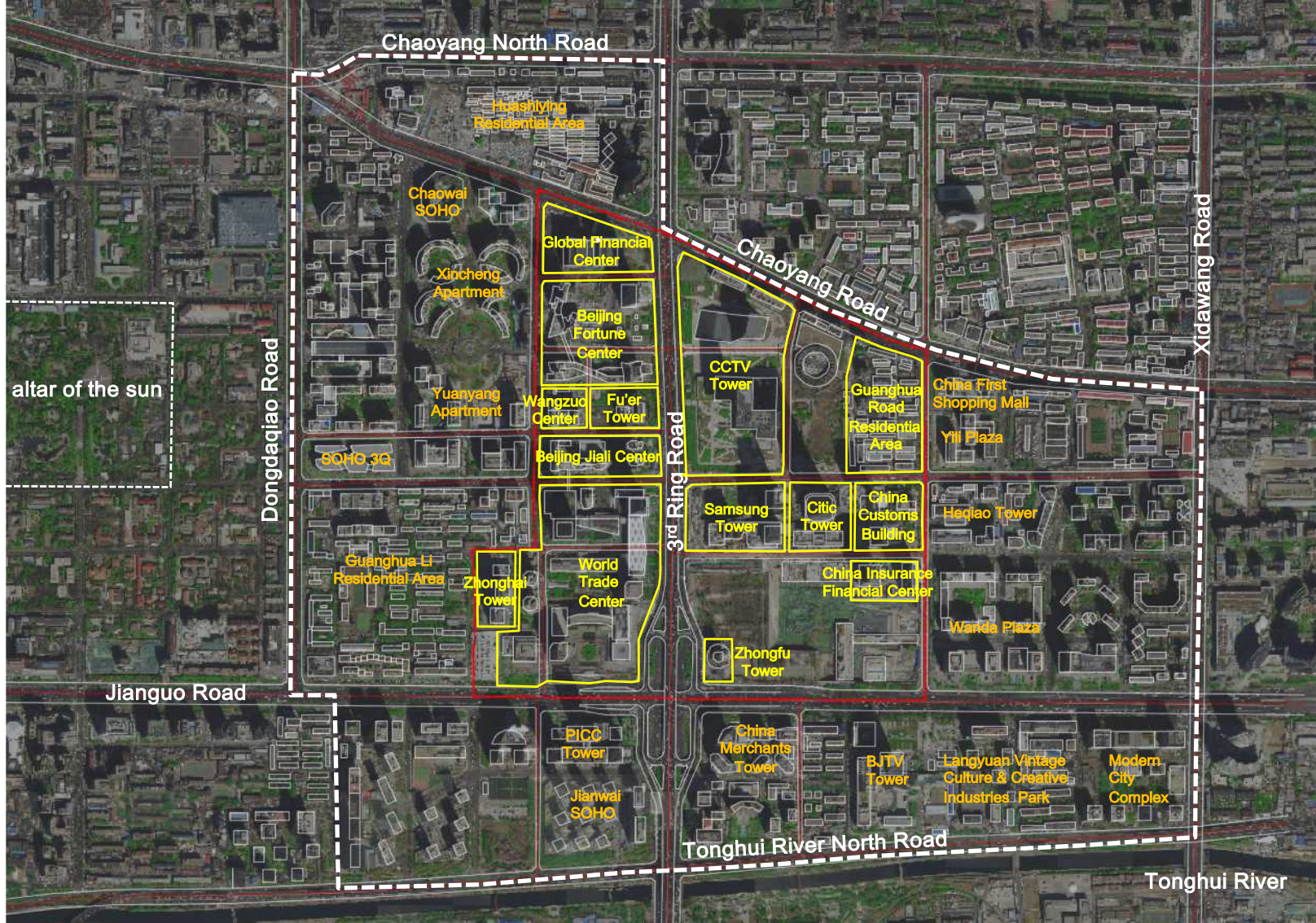
# Land Use Plan



## Legend

Residential	Public Green space	Administration
Commercial and Financial	Foreign affair Administration	Fundamental Education
Parking	Manufactory Industry	Water Body
Education and Research	Mixed use	Road
Culture and Entertainment	Municipal Utility	Railway





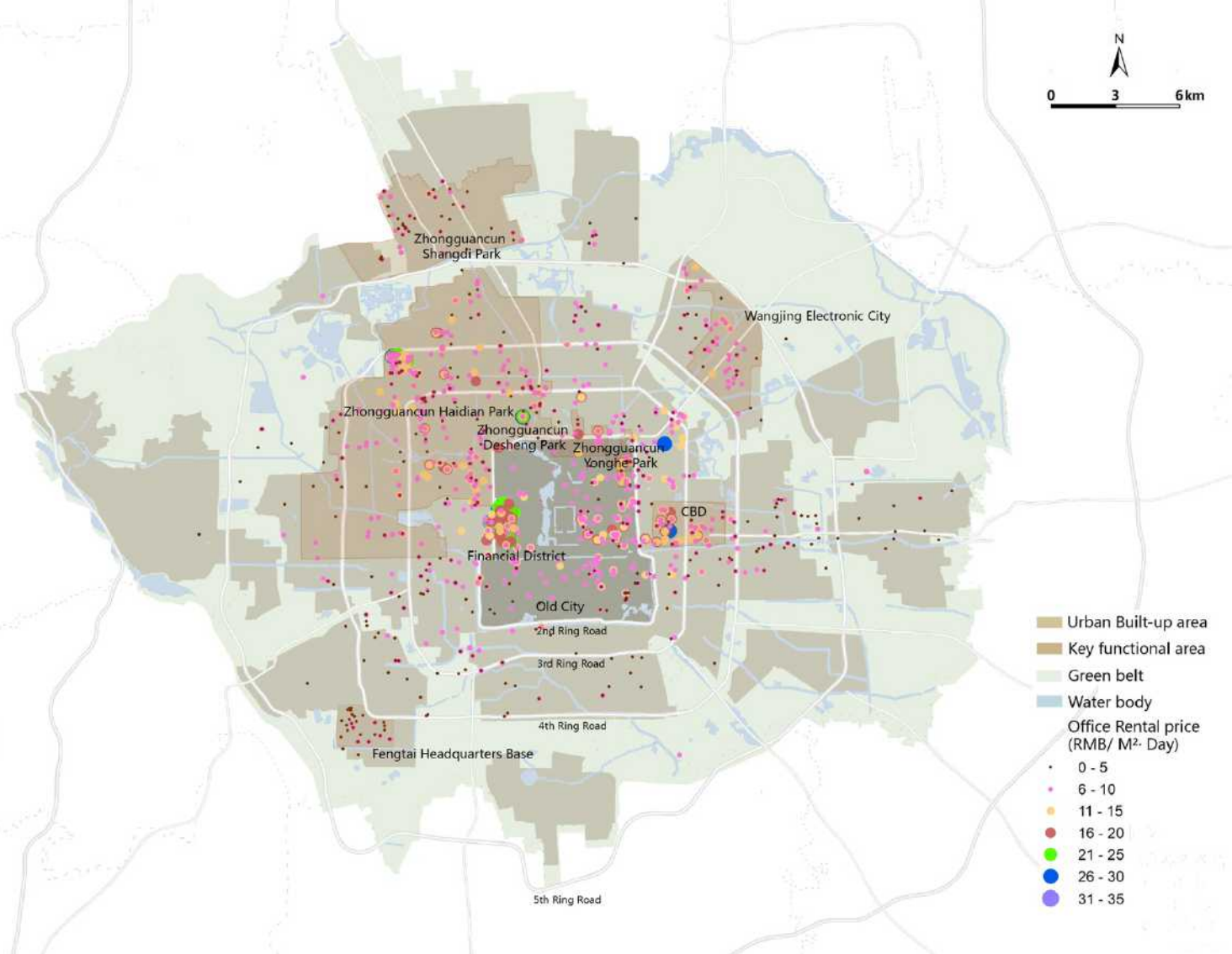
CBD 3.99km<sup>2</sup>



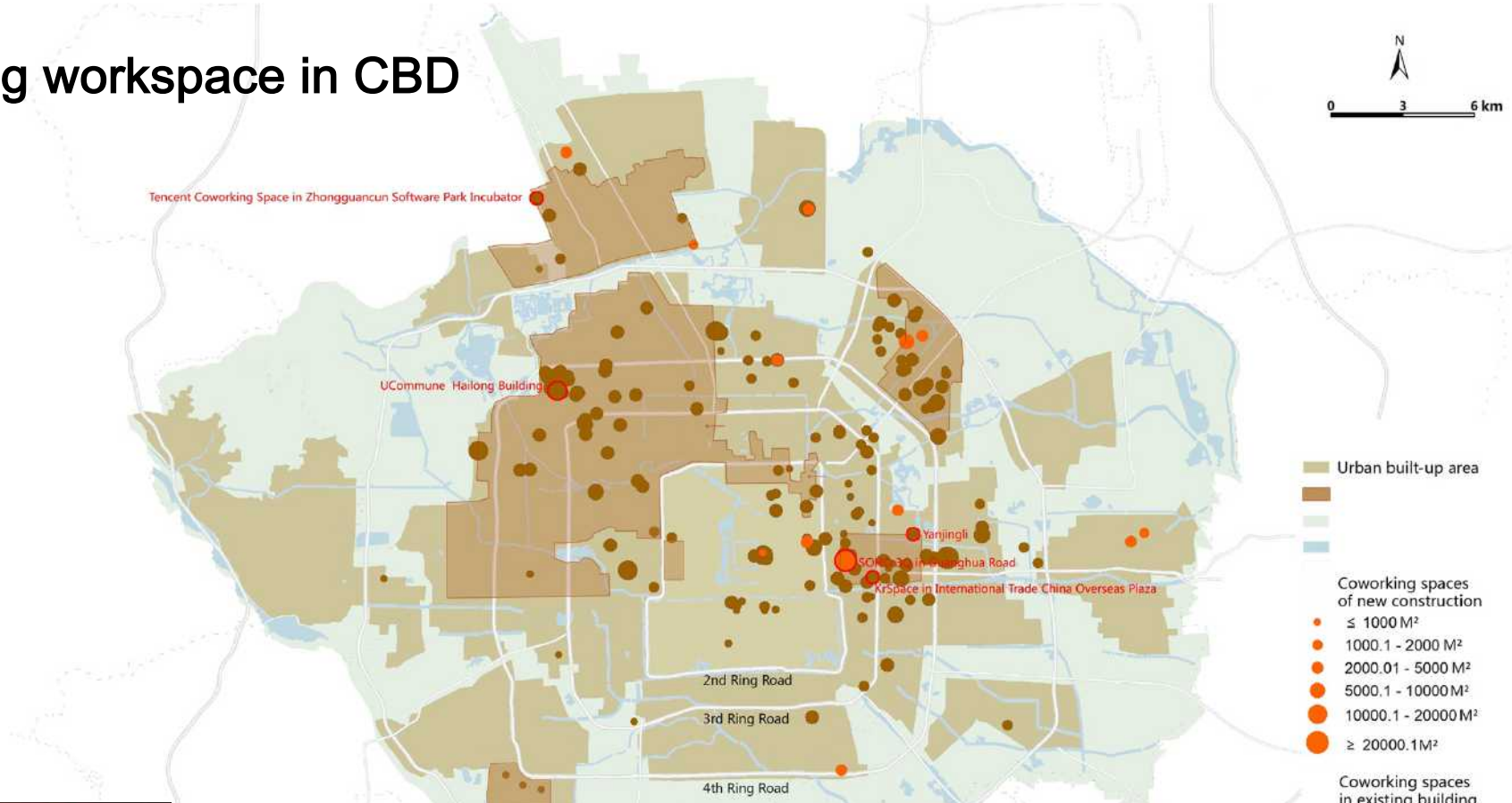




CBD Empty office in economy decline



# Sharing workspace in CBD

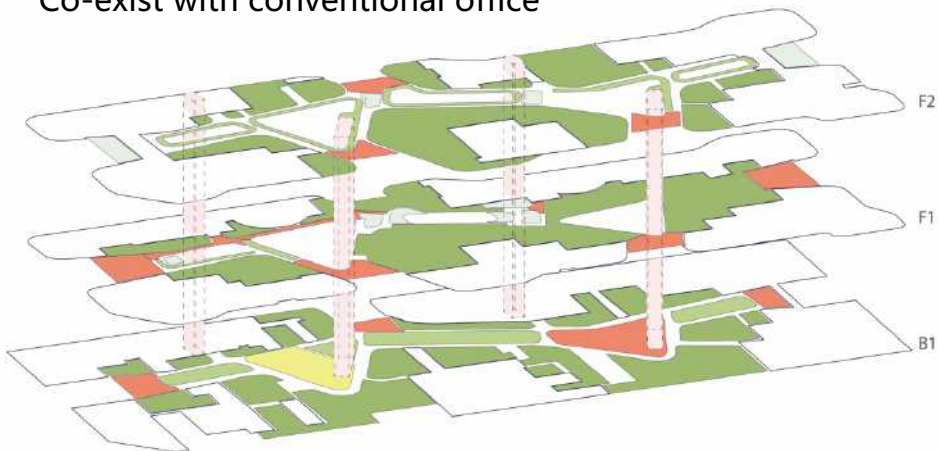




# Sharing workspace in CBD

Co-exist with conventional office

F3-F16 170000 m<sup>2</sup>



F1



F2



B1

<span style="color: red;">■</span> Shared Lounge & AD & Services	3200 m <sup>2</sup>
<span style="color: yellow;">■</span> Shared Hall	500 m <sup>2</sup>
<span style="color: lightgreen;">■</span> Shared Meeting	1600 m <sup>2</sup>
<span style="color: mediumgreen;">■</span> Individual - Working Space	2000 m <sup>2</sup>
<span style="color: darkgreen;">■</span> Shared desk - Working Space	12100 m <sup>2</sup>
<span style="color: pink;">■</span> Vertical transport	} 14000 m <sup>2</sup>
Circulation Space	
Co-working Area	
<span style="border: 1px solid black; display: inline-block; width: 10px; height: 10px;"></span> Other Space	20000 m <sup>2</sup>
Total Area	223400 m <sup>2</sup>
Co-working area ratio	0.15



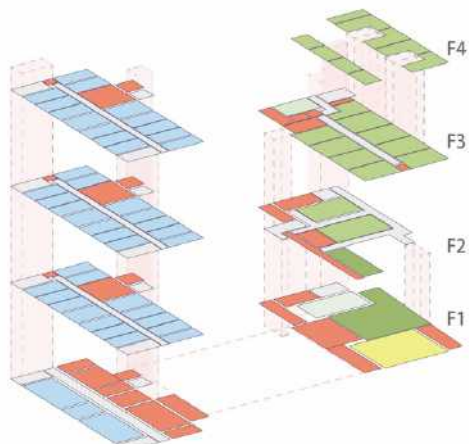
## SOHO 3Q 光华路 SOHO 3Q in Guanghua Road

\* SOHO 3Q由商场改造而成，面积和成本控制，部分表面被设计为办公区域，交通空间和办公空间界限较为模糊，故不能明确色块示意



# Sharing workspace in CBD

Co-exist with youth apartment



F1



F2



F3



F4

<span style="color: red;">■</span> Shared Lounge & AD & Services	700 m <sup>2</sup>
<span style="color: yellow;">■</span> Shared Hall	120 m <sup>2</sup>
<span style="color: lightgreen;">■</span> Shared Meeting	80 m <sup>2</sup>
<span style="color: lightgreen;">■</span> Individual - Working Space	580 m <sup>2</sup>
<span style="color: darkgreen;">■</span> Shared desk - Working Space	180 m <sup>2</sup>
<span style="color: blue;">■</span> Living Space	1020 m <sup>2</sup>
<span style="color: pink;">■</span> Vertical transport	1581 m <sup>2</sup>
<span style="color: grey;">■</span> Circulation Space	
<span style="color: white;">■</span> Courtyard	

Co-working Area 4261 m<sup>2</sup>

Total Area 4261 m<sup>2</sup>

Co-working area ratio 1



燕京里  
Yanjingli







# SHARING CITY

Smart, future, shared lifestyle in the modern city : Guomao  
*EPMA Studio introduction + homework*





**Topic1 : living**

**Topic2 : working**

**Topic3 : mobility / transportation**

**Topic4 : biodiversity/ green infrastructure**

**Topic5 : commerce / leisure/ public and community service**



**Site  
1km<sup>2</sup>**

**Phase1 : strategy research** ( cover the whole site ) ;

**Phase2 : detailed design** ( on selected area )

## **The following is required for each group:**

1. Case study: a globe case of sharing city life with urban regeneration or smart city design case, and a CBD case in your hometown or country;
2. General proposal of the whole site;
3. Detailed solution of the specific site.



# Sharing cities cases:

## sharing living :

- -Upgrading San Rafael-Unido ( 1st Global Holcim Awards Gold ) by Silvia Soonets, Isabel Cecilia Pocaterra, Maria Ines Pocaterra/Proyectos Arqui 5, Urban Integration Project, Caracas, Venezuela
- -Kozaza and Lobo, Korea
- -The Co-housing scheme of Copenhagen
- -Xiaomi YOU+ youth community in Beijing Suzhouqiao near North West Third Ring , China

## sharing working :

- -Wework in London South End , UK
- -The Hive in Singapore, Hong Kong, Bangkok
- -KoHub in Koh Lanta, Thailand
- -Yanjingli in Beijing Chaoyang District, China

## sharing transportation :

- -Metro cable, Medellin, Columbia
- -Shared cycling scheme over a few decades in Copenhagen
- -Sweetch ( sharing parking ) in San Francisco, USA

## sharing infrastructure :

- -Urban Flood Protection Infrastructure ( 4th Global Holcim Awards Bronze ) by BIG , New York City, USA
- -Urban Remediation and Civic Infrastructure Hub ( 3rd Global Holcim Awards Silver ) by Alfredo Brillembourg, Hubert Klumpner/Urban Think Tank, São Paulo, Brazil
- -Marina Barrage, Singapore

### Sharing commerce :

- -Parkview Green, Beijing, China
- -Sino-Ocean Taikoo Li Chengdu, China

### Sharing leisure :

- - Millennium Park in Chicago, US
- - Vessel in New York, US by Thomas Heatherwick
- -1000 trees , Shanghai, China by Thomas Heatherwick

### sharing service :

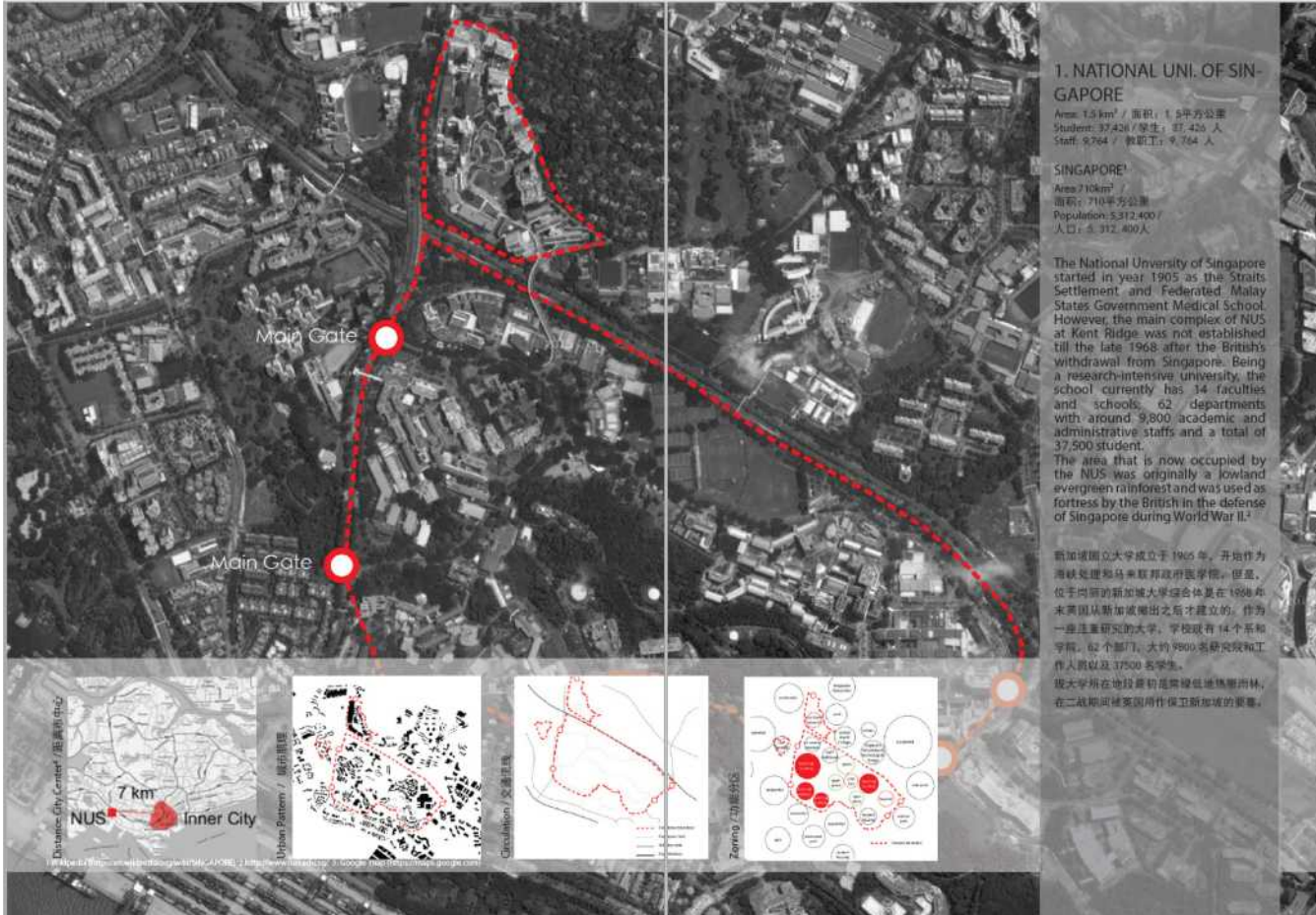
- - Micro-Yuan'er ( 2016 Aga Khan Award for Architecture ) by ZHANG Ke , Beijing, China
- - Madinat al Zahra Museum ( 2010 Aga Khan Award for Architecture ) by Sobejano Architects S.L.P, Fuensanta Nieto & Enrique Sobejano, Cordoba, Spain
- -Gaoligong Handcraft Paper Making Museum by HUA Li/ TAO Trace Architecture office, Yunan Province, China
- -Friendship Centre ( 2016 Aga Khan Award for Architecture ) by Kashef Mahboob Chowdhury/Urbana, Gaibandha, Bangladesh



# Smart cities cases:

1. Woven city, designed by BIG
2. Masdar city ( <https://masdarcity.ae> )
3. New Songdo City, designed by KPF (<https://www.kpf.com/projects/new-songdo-city>)
4. Xiong'an New Area (<http://english.xiongan.gov.cn>)
  
5. Smarter London Together ( <https://www.london.gov.uk/what-we-do/business-and-economy/supporting-londons-sectors/smarter-london/smarter-london-together> )
6. Sidewalk Toronto ( <https://www.sidewalktoronto.ca> )
7. Smart Seoul ( <http://digital.seoul.go.kr/eng/smart-seoul/strategy> )
8. Kashiwa-no-ha Smart City (<https://kashiwanoha-smartcity.com/en/>)
9. Amsterdam Smart City (<https://amsterdamsmartcity.com>)
10. Smart Nation Singapore (<https://www.smartnation.sg>)
11. Smart City Wien (<https://smartcity.wien.gv.at/site/en/smart-traffic-lights/>)
12. Smart Cities New York (<https://smartcitiesny.com>)
13. SmartPORT “DIGITAL” : Port of Hamburg (<https://www.hafen-hamburg.de/de/presse/media/video/smartport-digital---37960>)

# Case study: 1. general information (information of city and population, brief introduction of the case, image of location, urban pattern, circulation, zoning, page 1)

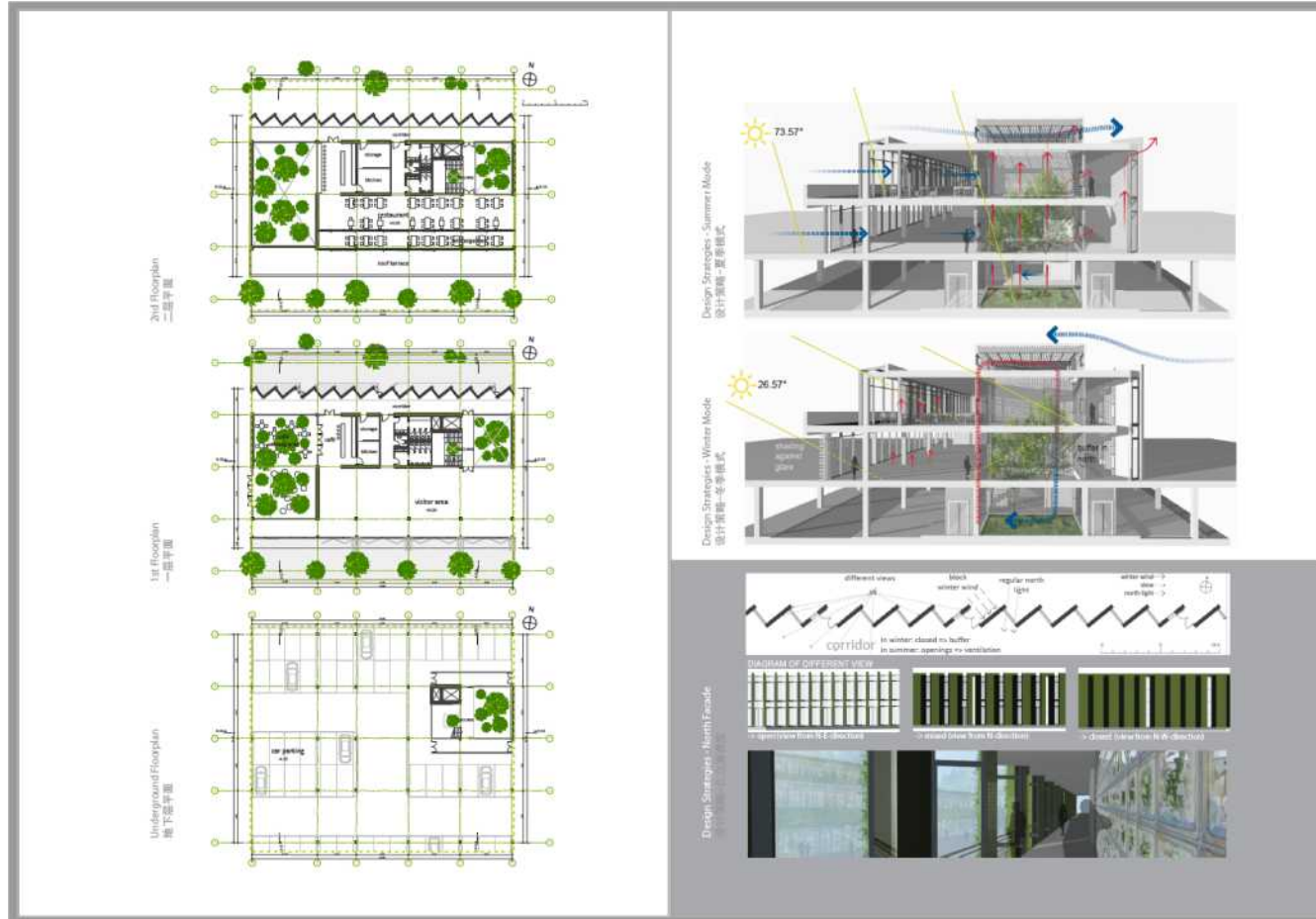


Template of Indesign file (fixed layout)



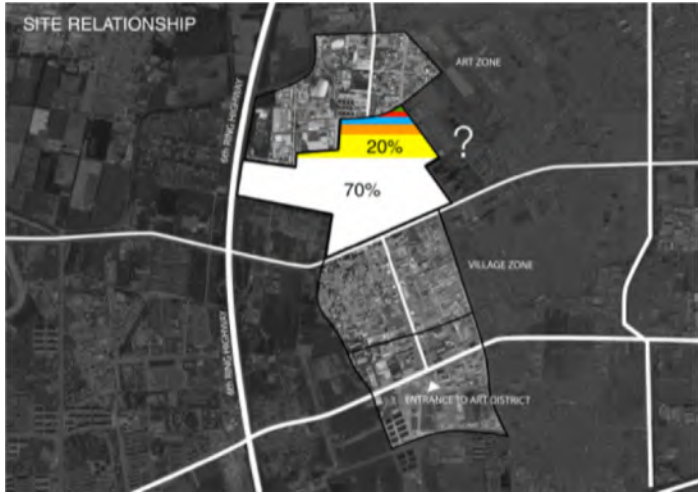
# Case study:

2. detailed information (image, photo, diagram, text, etc.. page 2)
3. Brief study of your case (600-1000 words)



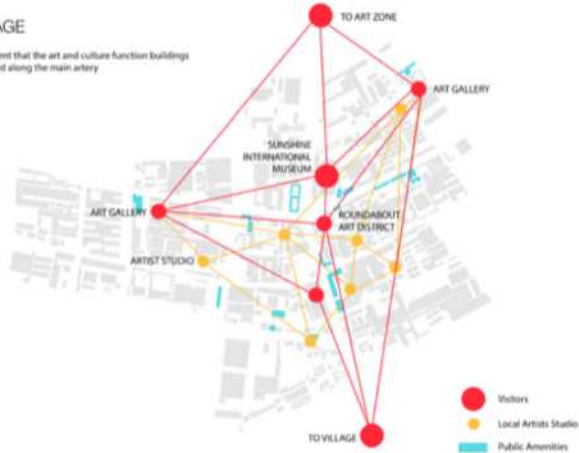
Template of  
Indesign file  
(free layout)

# General proposal : system analysis and strategies for the whole site



## LINKAGE

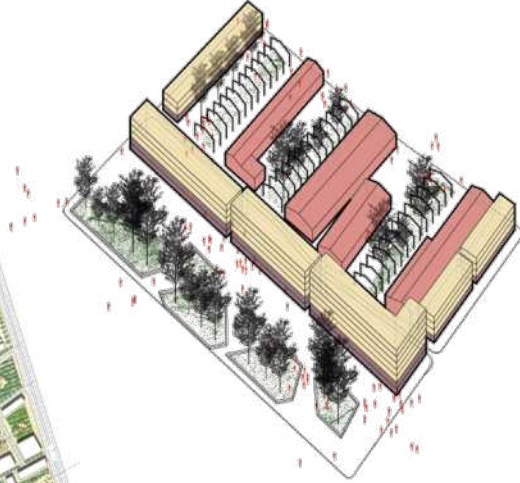
It is apparent that the art and culture function buildings are situated along the main artery



Example: Edge City, 2016



# Detailed Design: urban design of the specific site of the topic



Example: Edge City, 2016

